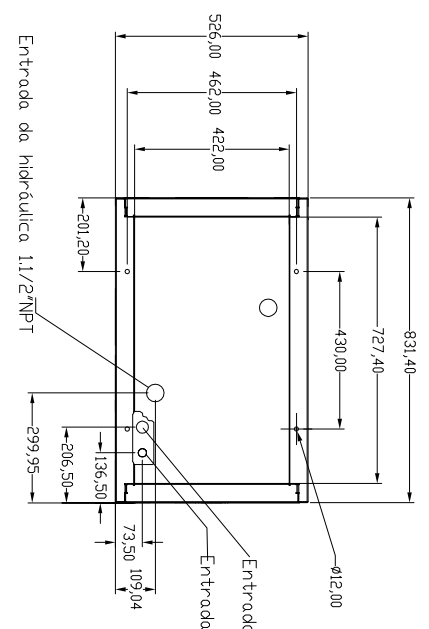
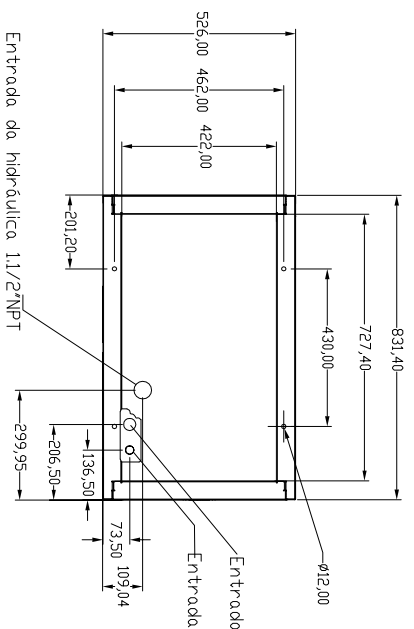


A	B	C	D	E	F	G
Safe handling : max burr height = 0.1mm Manutention sécuritaire : Burr Max Tolerances ISO 2768-mK Unless specified Für default	0.5 -6 ± 0.1	± 0.2	± 0.3	± 0.5	± 0.8	± 1.2
± 0.1	± 0.2	± 0.3	± 0.5	± 0.8	± 1.2	± 2
ROHS (2002/95/EC)	ROHS (2002/95/EC)	ROHS (2002/95/EC)	ROHS (2002/95/EC)	ROHS (2002/95/EC)	ROHS (2002/95/EC)	ROHS (2002/95/EC)

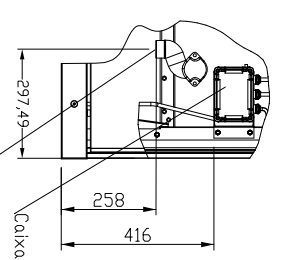
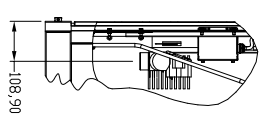
BOMBA COM 2 UNIDADES DE BOMBADORA



BOMBA COM 1 UNIDADES DE BOMBADORA



REV	DATA	D.	C.	A.	REVISES/REVISIONS	ECN



Entrada da hidráulica 1 1/2"

5	A	B	C	D	E	F	G	
Material:						990350		Passo/Weight [2] Kg
Descrição/Description:		PLANTA BAIXA FAMÍLIA 0-350		Escala 0,100 Scale		Rev - 00 ECN		
Desenvolvido por C. Oliveira Desenhado por J. Roberto Direção por J. Roberto Aprovado por J. Roberto		Data 02-10-2015		Dim: mm A2		Folha 1/1 Sheet		
Geom toler/Tolôncas geométricas ISO 1101 Surface texture/Étât de surface ISO 1302 Weld Symb/Symbolisation de soudure ISO 2553								